



## Thaw and Culture Details

Cell Line Name	<b>STAN140i-243C1</b>
WiCell Lot Number	<b>DB38122</b>
Provider	Stanford University – Laboratory of Dr. Thomas Quettermous
Banked By	Icahn School of Medicine at Mount Sinai Stem Cell Core
Thaw and Culture Recommendations	WiCell recommends thawing 1 vial into 2 wells of a 6 well plate. WiCell recommends thawing using ROCK Inhibitor for best results.
Culture Platform	Feeder Independent
	Medium: mTeSR1™
	Matrix: Matrigel®
Protocol	WiCell Feeder Independent mTeSR1™ Protocol
Passage Number	p12 These cells were cultured for 12 passages after colony picking prior to freeze. Add +1 to the passage number to best represent the overall passage number of the cells at thaw.
Date Vialied	26-February-2016
Vial Label	ISMMS 243i C1P12 ITA 022616
Biosafety and Use Information	Appropriate biosafety precautions should be followed when working with these cells. The end user is responsible for ensuring that the cells are handled and stored in an appropriate manner. WiCell is not responsible for damages or injuries that may result from the use of these cells. Cells distributed by WiCell are intended for research purposes only and are not intended for use in humans.

## Testing Performed by WiCell

Test Description	Test Provider	Test Method	Test Specification	Result
Karyotype by G-banding	WiCell	SOP-CH-003	Expected karyotype	See Report
Post-Thaw Viable Cell Recovery	WiCell	SOP-CH-305	Recoverable attachment after passage	Pass
Identity by STR	UW Translational Research Initiatives in Pathology Laboratory	PowerPlex 16 HS System by Promega	Defines profile	Pass
Sterility	Steris	ST/07	Negative	Pass
Mycoplasma	WiCell	SOP-CH-044	Negative	Pass

## Testing Reported by Provider

Test Description	Method	Result
Mycoplasma	Lonza MycoAlert kit	Negative

The Provider stated that some or all of the additional analyses listed below may have been performed for this cell line. For more information, publication and dbGaP links, where available, are provided on the cell line specific web page on the WiCell website.

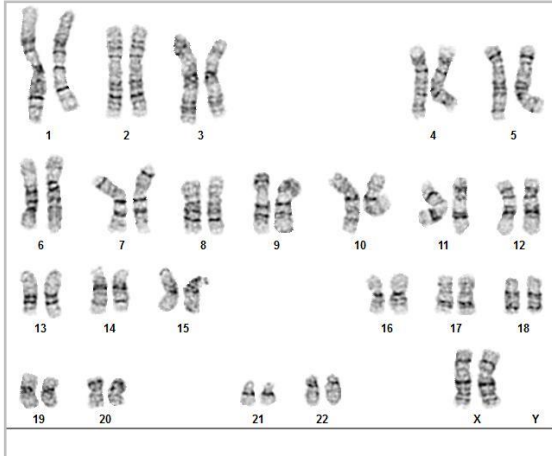
- RNA-Seq
- Whole Genome Sequencing
- Infinium® Expanded Multi-Ethnic Genotyping Array (MEGA<sup>EX</sup>)



Approval Date	Quality Assurance Approval
28-October-2016	<input checked="" type="checkbox"/> _____ <small>JMG Quality Assurance</small>

**Date Reported:** Thursday, April 11, 2019  
**Cell Line:** STAN140i-243C1-DB38122 14461  
**Passage#:** 14  
**Date of Sample:** 4/1/2019  
**Specimen:** Human IPS  
**Results:** 46,XX

**Cell Line Sex:** Female  
**Reason for Testing:** lot release testing  
**Investigator:** [REDACTED], WiCell



**Cell:** 33  
**Slide:** G02  
**Slide Type:** Karyotype  
**Total Counted:** 20  
**Total Analyzed:** 8  
**Total Karyogrammed:** 4  
**Band Resolution:** 400 - 525

### Interpretation:

**This is a normal karyotype; no clonal abnormalities were detected at the stated band level of resolution.**

**Completed by:** [REDACTED] CG(ASCP)  
**Reviewed and Interpreted by:** [REDACTED], PhD, FACMG

**Date:** \_\_\_\_\_ **Sent By:** \_\_\_\_\_ **Sent To:** \_\_\_\_\_ **QC Review By:** \_\_\_\_\_

*Limitations: This assay allows for microscopic visualization of numerical and structural chromosome abnormalities. The size of structural abnormality that can be detected is >3-10Mb, dependent upon the G-band resolution obtained from this specimen. For the purposes of this report, band level is defined as the number of G-bands per haploid genome. It is documented here as "band level", i.e., the range of bands determined from the four karyograms in this assay. Detection of heterogeneity of clonal cell populations in this specimen (i.e., mosaicism) is limited by the number of metaphase cells examined, documented here as "# of cells counted".*

*This assay was conducted solely for listed investigator/institution. The results of this assay are for research use only. Unless otherwise mutually agreed in writing, the services provided to you hereunder by WiCell Research Institute, Inc. ("WiCell") are governed solely by WiCell's Terms and Conditions of Service, found at [www.wicell.org/privacyandterms](http://www.wicell.org/privacyandterms). Any terms you may attach to a purchase order or other document that are inconsistent, add to, or conflict with WiCell's Terms and Conditions of Service are null and void and of no legal force or effect.*

Department of Pathology and Laboratory Medicine  
TRIP Laboratory (Molecular)  
<https://research.pathology.wisc.edu/trip/>  
(608) 265-9168

[characterization@wicell.org](mailto:characterization@wicell.org)  
(608) 316-4145

**Sample Report:**

14461-STR  
**Sample Name on Tube:** 14461-STR  
58.6 ng/ $\mu$ L, (A260/280=58.6)  
**Sample Type:** Cells  
**Cell Count:** ~2 million cells

**Requestor:**

WiCell Research Institute  
Quality Assurance Department

**Receive Date:** 04/01/19

**Report Sent:** 04/08/19  
**Assay Date:** 04/02/19  
**File Name:** STR 190403 wmr  
**Report Date:** 04/08/19

STR Locus	STR Genotype Repeat #	STR Genotype
FGA	16-18,18.2,19,19.2,20,20.2,21,21.2,22, 22.2, 23, 23.2, 24, 24.2, 25, 25.2, 26-30, 31.2, 43.2, 44.2,45.2, 46.2	Identifying information has been redacted to protect donor confidentiality. If more information is required, please, contact <a href="#">WiCell's Technical Support</a> .
TPOX	6-13	
D8S1179	7-18	
vWA	10-22	
Amelogenin	X,Y	
Penta_D	2.2, 3.2, 5, 7-17	
CSF1PO	6-15	
D16S539	5, 8-15	
D7S820	6-14	
D13S317	7-15	
D5S818	7-16	
Penta_E	5-24	
D18S51	8-10, 10.2, 11-13, 13.2, 14-27	
D21S11	24,24.2,25,25.2,26-28,28.2,29,29.2, 30, 30.2,31, 31.2,32,32.2,33,33.2, 34,34.2,35,35.2,36-38	
TH01	4-9,9.3,10-11,13.3	
D3S1358	12-20	

**Results:** Based on the 14461-STR cells submitted by WiCell QA dated and received on 04/01/19, this sample (Label on Tube: 14461-STR) defines the STR profile of the human stem cell line STAN140i-243C1 comprising 27 allelic polymorphisms across the 15 STR loci analyzed.

**Interpretation:** No STR polymorphisms other than those corresponding to the human STAN140i-243C1 stem cell line were detected and the concentration of DNA required to achieve an acceptable STR genotype (signal/noise) was equivalent to that required for the standard procedure (~1 ng/amplification reaction) from human genomic DNA. This result suggests that the 14461-STR sample submitted corresponds to the STAN140i-243C1 stem cell line and was not contaminated with any other human stem cells or a significant amount of mouse feeder layer cells.

**Sensitivity:** Sensitivity limits for detection of STR polymorphisms unique to either this or other human stem cell lines is ~2-5%.

X *RMB*

Digitally Signed on 04/08/19

X *WMR*

Digitally Signed on 04/08/19

██████████, BA  
TRIP Laboratory, Molecular

██████████, PhD, Director / Co-Director  
UWHC Molecular Diagnostics Laboratory / UWSPH TRIP Laboratory

Testing was accomplished by analysis of human genetic polymorphisms at STR loci. This methodology has not yet been approved by the FDA and is for investigational use only.

Acknowledge TRIP in your publications, posters & presentations. For details, see: <http://www.pathology.wisc.edu/research/trip/acknowledging>  
Unless otherwise mutually agreed in writing, the services provided to you hereunder by WiCell Research Institute, Inc. ("WiCell") are governed solely by WiCell's Terms and Conditions of Service, found at <https://www.wicell.org/media.acux/ca76d97c-862a-43f3-b02a-ab2d1e619100>. Any terms you may attach to a purchase order or other document that are inconsistent, add to, or conflict with WiCell's Terms and Conditions of Service are null and void and of no legal force or effect.

# Native Product Sterility Report



WiCell  
504 S Rosa Rd, Rm 101  
Madison, WI 53719

SAMPLE #: 18102104  
DATE RECEIVED: 25-Oct-18  
TEST INITIATED: 02-Nov-18  
TEST COMPLETED: 16-Nov-18

SAMPLE NAME / DESCRIPTION: STAN140i-243C1 D838122 14061  
STAN204i-448C1 D844534 14062  
LUEL8318i-2 WB66927 14063  
LUEL7149i-2 WB66926 14064  
LUEL8364i-5 WB66933 14065  
STAN096i-102C6 D844680 14066  
STAN095i-102C4 D844677 14067  
STAN205i-448C2 D844537 14068  
LUEL7996i-2 WB66935 14069  
WC007i-FX13-2 WB66934 14070

UNIQUE IDENTIFIER: NA  
PRODUCT REGISTRATION: Other: Human iPS cells

## TEST RESULTS:

# Tested	# Positives (Growth)	- Control
10	0	2 Negatives

## TEST SUMMARY:

# Samples	Media Type	Volume (mL)	Incubation Temperature (° C)	Incubation Duration (Days)
10	TSB	40	20 - 25	14
10	FTG	40	30 - 35	14

REFERENCE: Processed according to LAB-003: Sterility Test Procedure  
METHOD VALIDATION / PD #: 000053  
TEST METHODOLOGY: USP - Direct Transfer

COMMENTS: NA

REVIEWED BY

DATE 16 NOV 18

Specific test results may not be indicative of the characteristics of any other samples from the same lot or similar lots. This test report shall not be reproduced, except in full, without prior written approval. Liability is limited to the costs of the tests.



# Mycoplasma Assay Report

PCR-based assay performed by WiCell

Lot Release Testing

27Mar19

FORM SOP-CH-044.03

Version B Edition 01

#	Sample Name	Result	Comments/Suggestions
1	STANI40i-243C1-DB38122 14461	Negative	Band was not seen at 270bp, indicating the absence of mycoplasma.
2	Positive (+) Control	Positive	
3	Negative (-) Control	Negative	

**Reported by:** Katie Remondini, Cell Culture Specialist

**Reviewed by:** Sondra Minter, Cell Culture Specialist

**Date:** \_\_\_\_\_ **Sent By:** \_\_\_\_\_ **Sent To:** \_\_\_\_\_

*Unless otherwise mutually agreed in writing, the services provided to you hereunder by WiCell Research Institute, Inc. ("WiCell") are governed solely by WiCell's Terms and Conditions of Service, found at [www.wicell.org/privacyandterms](http://www.wicell.org/privacyandterms). Any terms you may attach to a purchase order or other document that are inconsistent, add to, or conflict with WiCell's Terms and Conditions of Service are null and void and of no legal force or effect.*

*A gel image is available upon request.*